

# Paonia Comprehensive Plan

Review of Draft Elements:

Transportation;  
Parks, Recreation & Trails;  
Trees

Town of Paonia Planning Commission Meeting  
May 1st, 2024

# Paonia Comprehensive Plan

## Draft Element Review: Transportation



# Community Vision

Paonia's streets and sidewalks are well-maintained, safe, and comfortable thoroughfares for multiple modes of transport and support a rural and easy paced quality of life for residents. Clear and differentiated routes for commercial and passthrough traffic and pedestrian and bicycle traffic provide safety and convenience. Paonia residents can access key facilities and services without owning or operating a motorized vehicle. Transportation stakeholders understand and are responsive to the transportation needs of our community.

# Community Values

- Well-maintained streets and sidewalks that are safe, with ample street tree presence.
- Mixed use routes that are comfortable and safe for all members of our community.
- Non-motorized routes and trails that are comfortable and safe for all members of our community.
- Major thoroughfares and all new roads that accommodate both pedestrian non motorized transport and work with existing and new street trees.



# Policies

**POLICY TRANSPORT-1:** Maintain and improve Paonia's streets and sidewalks to support daily travel for all modes of transport and increase alternative transit activity to every day destinations.

**POLICY TRANSPORT-2:** Identify and support specific transportation routes for shared or multimodal transportation including motorized travel and non-motorized travel (pedestrians, bikes, children, wheelchairs, strollers, and the elderly) through the development of complete streets, yield streets, mixed traffic designated streets and other approaches.

# Policies

**POLICY TRANSPORT-3:** Designate appropriate non-motorized routes for the mobility-challenged, children attending school, commuter and recreational bicycling, wildlife, and nighttime, safety.

**POLICY TRANSPORT-4:** Identify and integrate daily and seasonal wildlife corridors and traffic into consideration when planning and developing new streets, pathways, and redesigning Hwy 133 access and in town crossings of motorized streets.

**POLICY TRANSPORT-5:** Prioritize, plan and execute street and sidewalk repairs in alignment with safe routes for park and school access and mixed use corridors.

# Policies

**POLICY TRANSPORT-6:** Ensure that all sidewalk upgrades include ADA on and off ramps at curbside and street crossings.

**POLICY TRANSPORT-7:** Identify, align and incorporate the use of appropriate materials for sidewalks, trails and walkways that is both ADA compliant and work to support existing trees and stormwater management.

**POLICY TRANSPORT-8:** Ensure that all public buildings, parks and event venues plan for and include ADA parking and entrances.



# Policies

**POLICY TRANSPORT-9:** Encourage, enhance, and promote pedestrian access and walkability to and within the Historic Town Core.

**POLICY TRANSPORT-10:** Integrate trail development and non-motorized connectivity into development/land use requirements for properties in key transportation corridors.

**POLICY TRANSPORT-11:** Increase and maintain safety of Paonia's motorized gateways to Hwy 133 and include non-motorized access and safety in related planning and updates.



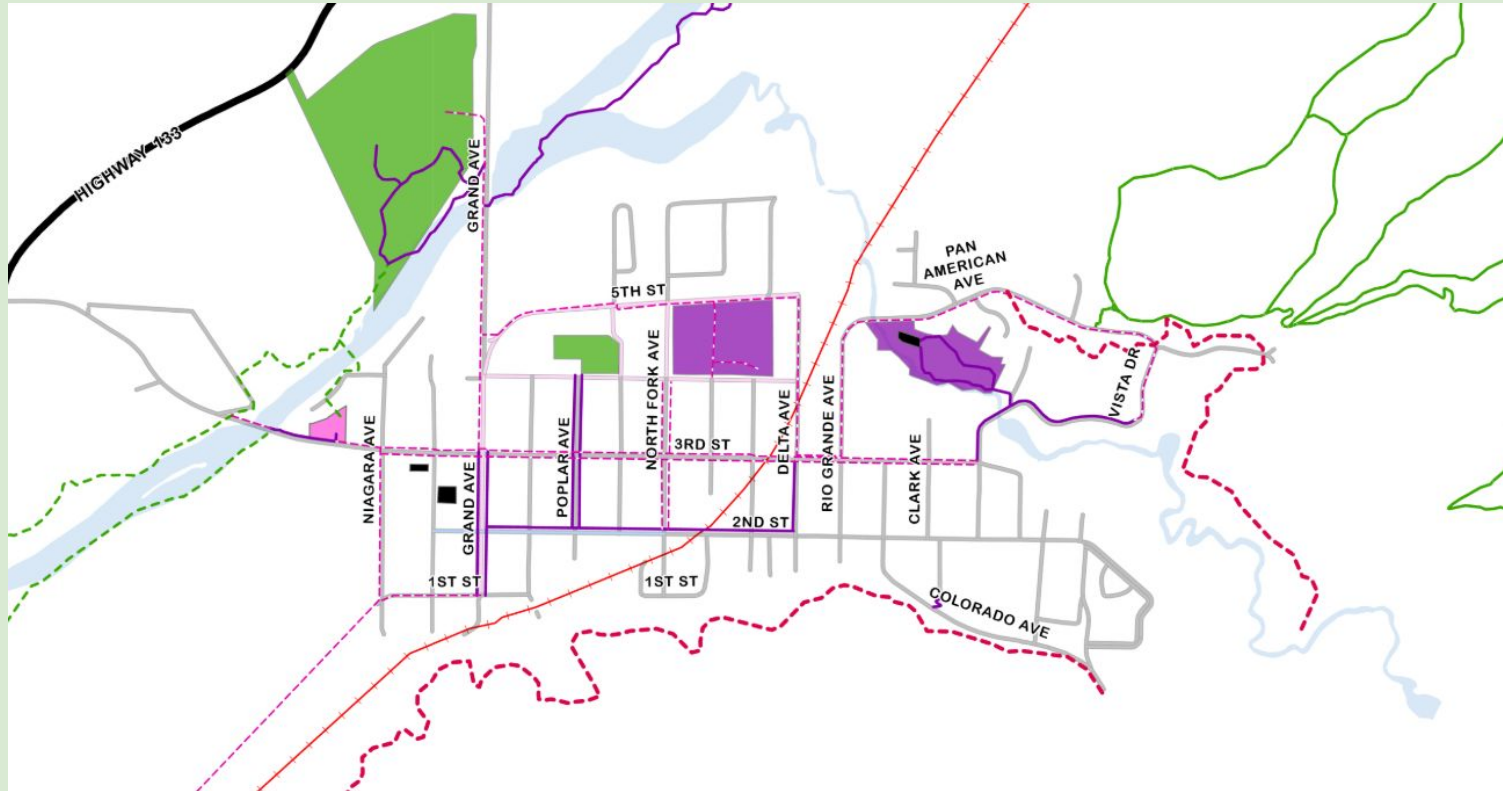
# Policies

**POLICY TRANSPORT-12:** Coordinate and communicate with regional transportation stakeholders, both NGO and governmental, to enhance regional transportation services.

**POLICY TRANSPORT-13:** Work with Delta County and Paonia Regional Airport to identify potential revenue streams and economic development opportunities, and support connectivity with regional commercial airport locations.

**POLICY TRANSPORT-14:** In accordance with the Delta County Recreation and Trails Master Plan, proactively plan and coordinate with stakeholders and other government agencies to reuse or convert the existing coal train railroad track to regional rail or trail system that can serve members of the public and visitors.

# Composite Transportation Map



Public Parking Lots

Railroad

Speed Limits

15

20

25

Safe Pathways

Existing

Not Compliant/  
Unknown

Desired Public  
Access

Jumbo Trails

Proposed School River Trails

Park

School

Library

# Questions & Comments?



Photo Credit: Uncover Colorado

# Paonia Comprehensive Plan

## Draft Element Review: Trees

(part of Infrastructure Element)



Photo Credits (from left): Delta County Independent, Bronwen Barry

# Vision

**VISION:** Paonia is home to a thriving, safe, and uniquely beloved town forest that is both resilient and adaptive to a changing climate and the aging of individuals within the larger canopy.

## **VALUES:**

- The unique character and wonderful quality of life our town tree canopy provides
- The ecosystem services that our urban forest provides the Town and its residents
- The increased value of real estate that our town canopy provides
- The increased walkability of the historic neighborhoods that is enhanced by the town forest

# Policies

**POLICY TREES-1:** Monitor, properly care for and carefully replace street and park trees to maintain and improve the Town's urban forest.

**POLICY TREES-2:** Conduct Urban Tree inventory every 5yrs or include street and park tree health assessment and replacement plan in annual budget.

**POLICY TREE-3:** Provide greater support and accountability for homeowners' maintenance of trees in public right-of-way. And engage and empower citizens to participate in street tree care.

# Policies

**POLICY TREE-4:** Expand the urban forest to mitigate urban heat island effect, support walkability, preserve real estate value, preserve small water cycling, and improve upstream watershed health.

**POLICY TREE-5:** Ensure successful succession in a changing climate by supporting programs that plant new trees at least three years prior to old ones being removed.



# Questions & Comments?



Photo Credit: Resilience & Regeneration LLC

# Paonia Comprehensive Plan

## Draft Element Review: Parks, Recreation & Trails



Photo Credits (from left): Brittney Paul, Carla Gresher Augenstein, High Country Shopper

# Community Vision

Paonia's parks, recreation amenities, and trail system are well-maintained, adequately funded and recognized for the value they provide to the community first and to recreational visitors.

There is a formalized role for community leaders and volunteers to support implementation of Parks, Recreation and Trails Master Plan as well as other parks, recreation facilities and trails maintenance and improvements.



# Community Values

- All residents can access a green space or park within a safe 10 minute walk from their homes.
- Recreational amenities that serve residents and prioritize their needs before tourists' needs.
- Access to parks, open space, and opportunities for a full range of recreational uses.
- Planning and budgeting procedures for parks, recreation assets, and trails involve the public.
- Responses to public requests that are timely and professional.



Photo credit: Tamie Meck

# Policies

**POLICY REC-1:** Maintain and enhance parks, trails, and other recreation amenities focusing on the needs and desires of youth and elders first, personal fitness and health of all community members second, and visitors/tourism third.

**POLICY REC-2:** Increase capacity and resources for local parks, recreation amenities and trails through partnerships with community volunteers and relevant local and regional organizations and government agencies.

**POLICY REC-3:** Prioritize development initiatives that preserve and enhance community access to open space and integrate/require park and trail development into land use activities that take place in key areas or corridors of connectivity.

# Policies

**POLICY REC-4:** Preserve and enhance access for all to the river, riparian corridor, and wildlands.

**POLICY REC-5:** Ensure ADA accessibility for parking and use of Town parks.

**POLICY REC-6:** When considering new uses for parks or recreational development, take resident and native wildlife habitat into account.

**POLICY REC-7:** Support the continuation of open water channels, ditches, rivers, creeks and small surface water transport near Town Parks.

# Questions & Comments?



Photo Credit: Bronwen Barry



# Next Steps

**5/13/24 Final Board & Planning Commission Comments Due** on All Elements

**5/15/24 Public Comments due** on Transport, Parks/Rec/Trails, Tree Elements

**6/5/24 Final Draft Comprehensive Plan Presentation** to Planning Commission

**6/6/24 Community Celebration & Pizza Party** - 5:30pm @ Blue Sage

**6/11/24 ToP Board of Trustees Vote to Adopt Comprehensive Plan**

# Questions & Comments?



[paoniamasterplan@gmail.com](mailto:paoniamasterplan@gmail.com)

Photo Credit: Michelle Pattison